

# MISS CANDY

VERSILCRAFT 45 m | 2022 (delivery September 22)

**BLACKORANGE**  
SUPERYACHT EXPERTS



**LOA:** 45 m  
**Beam:** 9,20 m  
**Draft:** 2,61 m  
**Accommodation:** 10 guests in 5 cabins

**GT:** 499  
**Crew:** 11 in 4 cabins  
**Cruising speed:** 14 Kn  
**Max speed:** 16 Kh  
**Price:** 18,000,000€ VAT UNPAID





MISS CANDY

VAN DER LINDT 48  
020 18























































---

# MISS CANDY

## VERSILCRAFT 45 YACHT SPECIFICATION

---

<b>TYPE</b>	Twin Screw Displacement Yacht		
<b>FLAG</b>	Cayman island		
<b>DIMENSIONS</b>	Length O.A.	45,00 m	(147,6 ft)
	Length W.L.	44,30 m	(145,3 ft)
	Beam	9,20 m	(30,2 ft)
	Draft	2,45 m	(7,7 ft)
<b>TONNAGE</b>	499 GT		
<b>YEAR BUILT</b>	2022 (delivered August 2022)		
<b>BUILDER</b>	Versilcraft by Siman, Italy		
<b>INTERIOR DESIGNER</b>	Owner / Optima Design		
<b>EXTERIOR DESIGNER</b>	Versilcraft		
<b>CONSTRUCTION</b>	Steel hull HS36		
	Aluminium superstructure		
	Teak decks		
<b>CLASSIFICATION</b>	RINA C MALTA CROSS HULL, MACH; Y – Unrestricted Navigation		
<b>ASKING PRICE</b>	18,000,000 EUR VAT unpaid		
<b>LOCATION</b>	Viarregio, Italy		

---

## **MACHINERY**

---

<b>MAIN ENGINES</b>	2 x CATERPILLAR C32 ACERTTE diesel engines 1,193 kW (1,600 hp) @ 2,300 rpm		
<b>GEAR BOXES</b>	2 x REINJES WAF 542 L reduction gears with a 3,955:1 ratio		
<b>SHAFTS &amp; PROPELLERS</b>	2 x SCHAFFRAN, skewed 5 bladed propellers 2 x MARINOX 22HS A 120 shafts		
<b>SPEEDS &amp; FUEL (Half-Load)</b>			
Top Maximum speed	@ 2,300 RPM	16,6 knots	
<b>Maximum speed</b>	<b>@ 2,000 RPM</b>	<b>15 knots</b>	<b>375 l per hour</b>
<b>Cruising speed</b>	<b>@ 1,8500 RPM</b>	<b>14,2 knots</b>	<b>285 l per hour</b>
<b>Eco cruising speed</b>	<b>@ 1,400 RPM</b>	<b>11 knots</b>	<b>137 l per hour</b>
Economical speed	@ 1,200 RPM	9,9 knots	80 l per hour
	Plus 18 liters per hour for one generator		
<b>RANGE</b>	4,000 nm @ 14 knots 6,000 nm @ 11 knots		

---

### AUXILIARY MACHINERY & ELECTRICAL SYSTEM

---

**MAIN GENERATORS** 2 x CATERPILLAR C7.1, 118 kW

**ELECTRICITY** 400V 50Hz

---

### TANK CAPACITIES (approximate)

---

**FUEL** 67,241 Liters

**WATER** 16,458 Liters

**WATERMAKERS** 1 x Idromar reverse osmosis water maker, with a capacity of 360 liters/hour.

**CLEAN LUB OIL** 963 liters

**DIRTY LUB OIL** 963 liters

**GREY/BLACK WATER** 8,910 liters

---

### ANCILLARY EQUIPMENT

---

**STEERING SYSTEM** BCS / MARSILI / CMC

**BOW THRUSTER** CMC BTM85 POD with 85kW electric motor power

<b>STABILIZERS</b>	CMC MARINE Type LR150 11kW – fin LR 2.90 sqm
<b>FUEL OIL SEPERATOR</b>	Alfa Laval fuel oil separator with a pump capacity of 1,000 litres/hour Model otc 2-02-137
<b>BILGE PUMP</b>	Gianneschi / FGS TYPE ACB / 631B
<b>FIRE PUMP</b>	MACB / 631B Gianneschi / FGS
<b>BOILERS</b>	400 V ac No. 3-phase with resistance from 3 KW each
<b>SEWAGE TREATMENT</b>	SELMAR Model Biocon
<b>WC's</b>	Tecma

---

## **SAFETY & SECURITY EQUIPMENT**

---

<b>SAFETY</b>	4 x life rafts with "ocean A packs" 1 x Safesea SART 1 x Safesea EPIRB's 2 x Safesea V1000 VHF Radio SOLAS approved lifejackets 4 x recessed lifebuoys
<b>FIRE FIGHTING</b>	Portable fire extinguishers throughout the vessel Galley exhaust hood with CO2/FM200 fire extinguishing system A CO2/FM200 system in the engine room
<b>SECURITY</b>	4 x Samsung/Techwin Dome Camera 2MP IP66 IR/Night-day 1 x NVR/Camera Management software in bridge 1 x 22" viewing monitor in crew mess

---

## COMMUNICATION EQUIPMENT

---

<b>VHF</b>	1 x VHF SAILOR IMO DSC6222 1 x FURUNO VHF/DSC IMO FM8900S GMDSS
<b>IMARSAT C</b>	1x SAILOR 6000 SERIES
<b>RECEIVER</b>	1 x FURUNO GPS GP 170 IMO 1 X GPS JRC JLR 8400
<b>EXTERNAL COMMAND</b>	1 X VHF DSC SAILOR6215 1 X VHF DSC SIMRAD RS 100

---

## NAVIGATION EQUIPMENT

---

<b>GYRO COMPASS</b>	1 x SIMRAD GC85 IMO Approved Gyrocompass 1 X REPETER I 3007 1 X REPETER I 3005
<b>AUTOMATIC PILOT</b>	1 x SIMRAD Autopilot AP70 (Pack Solenoid) 1 x FURUNO Autopilot Interface
<b>ECHO SOUNDER</b>	1 x FURUNO ECHOSOUNDER FE800 with Transducer IMO
<b>RADAR</b>	1 x FURUNO RADAR FAR2218 RADAITOR 6,5 FT 12Kw IMO 1 x FURUNO RADAR DRS6A X-Class - ANTENNA OPEN ARRAY-XN12A 4FT-6KW
<b>CHART PLOTTER</b>	4 x Hatteland HD24T22MMD-MA1FOGP HATTELAND      DISPLAY 24" 1 x Hatteland HD24T22FUD-MA4-XXXX HATTELAND      DISPLAY 24 " IMO

	1 x FURUNO NAV PC Fanless 128GbSSD i5 8Gb - MaxSea Timezero - Chart Jepsen Megawide MedSea, accessories. Keyboard and trackball
<b>GPS</b>	1 x FURUNO GP170 GPS IMO Approved
<b>NAVTEX</b>	1 x FURUNO Navtex NX700 with approved PS
<b>WIND INSTRUMENTS</b>	1 x FURUNO Wind System with WEATHER STATION WX220 DUAL NMEA 0183/2000
<b>AIS</b>	Furuno

---

## DECK EQUIPMENT

---

<b>ANCHOR WINDLASS</b>	2x MZ Electronic model ARADO (5.5kW 400V 50Hz)22  2 Anchor 250 Kg 2 x 220 meter chain Dia 18
<b>AFT WARPING CAPSTANS</b>	2 x MZ Electronic (5,5 kW)
<b>BOAT CRANE &amp; DAVITS</b>	On garage one hydraulic Traveling lift, with lifting capacity of 2,000 kg
<b>SEARCHLIGHT</b>	2x adjustable projectors Sunshine mod. HR1012U 24 V d.c. with dual control station each
<b>AWNING</b>	A set of "Sunbrella" covers all exterior sofas and sun cushions
<b>TENDER</b>	1 X Castoldi jet Tender 14 Predisposition for 1 Castoldi Jet Tender 23

---

## **AUDIO/VISUAL ENTERTAINMENT SYSTEMS**

---

### **MAIN SALON**

1x Roll-out rack 8 RU  
1x Samsung TV Smart 65"  
1x Yamaha RX-V6A A/V Receiver  
1x Sat decoder predisposition  
5x in-ceiling 2-Way 210mm Speaker 100W  
1x 200W Subwoofer  
1x Blue Ray Player

### **OWNERS CABIN**

1x Roll-out rack 8 RU  
1x Samsung TV Smart 65" (Arrangement only)  
5x in-ceiling 2-Way 210mm Speaker 100W  
1x Yamaha RX-V6A A/V Receiver  
1x 200W Subwoofer  
1x Apple iPad Mini WiFi as AV Controller iPad Mini with Crestron App

### **GUEST CABINS**

1x Samsung Smart TV 55"  
3x Samsung Smart TV 40"  
4x Integrated Amplifier 2x50W  
8x in-ceiling 2-Way 165 mm Speaker 80W

### **CAPTAIN'S CABIN**

1x LED TV 26" Samsung  
2x in-ceiling 2-Way Sony DSX-A510BD  
1x boning alarm panel  
1x BN WASS cabin panel  
1x IR Repeater

### **CREW CABINS**

3x Streaming Network Speaker  
2x in-ceiling 2-way Sony DSX-A510BD

1x Boning alarm panel  
1x BN WASS cabin panel (Engineer cabin only)

#### **CREWMESS**

1x Samsung Smart TV 32"  
1x Integrated Amplifier Sony DSX-A510Bd  
2x in-ceiling 2-Way 165 mm Speaker 80W

#### **CINEMA**

1x Roll-out rack 12 RU  
1x Samsung TV Smart 65"  
1x Yamaha RX-V6A Receiver  
1x Sat decoder predisposition  
5x in-ceiling 2-Way 210mm Speaker 100W  
1x 200W Subwoofer  
1x Blue Ray Player

---

### **DOMESTIC EQUIPMENT**

---

#### **GALLEY**

2x Miele microwave ovens  
1x Miele steam oven  
1x Miele five fires electric cooking plate induction  
1x Miele dish washer PG 8056  
1x Double bowls wash  
1x Miele electric static oven  
5x Cubic meters volume for consumable refrigerator/freezer (G68945-G68940)  
1x Food Waste macerator 220v (Insinkerator)  
2x Scotsman ice-makers Professional (galley and saloon)  
1x wine cool cellar for 72 bottles  
1x Miele Coffee machine  
1x Drop-in heated plate dispenser  
1x Professional kitchen hood

#### **LAUNDRY**

2x Miele LIGHT2 professional washing machine

2x Miele professional drying machine  
1x Miele Professional ironing board B2847 Fashion

---

## **OTHER EQUIPMENTS**

---

**SHIP'S SAFES**                      3 x Digital combination safe boxes (internal size approx A4 format) in the Owner's cabin and two in the Captain's cabin.

---

## **ACCOMMODATION**

---

### **Accommodation for 10 guests in 5 cabins**

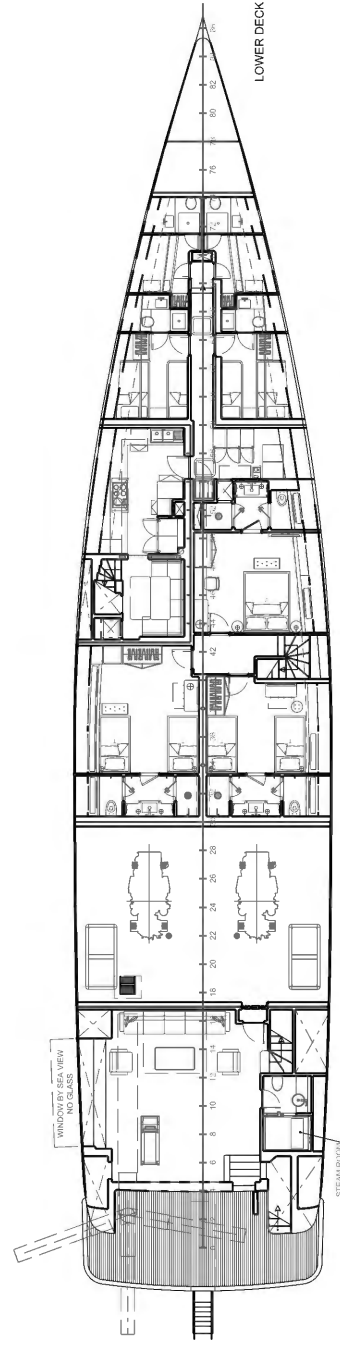
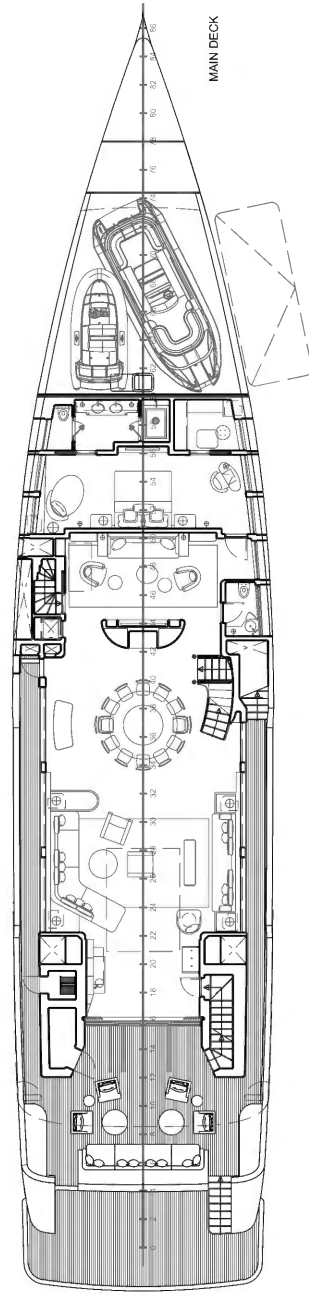
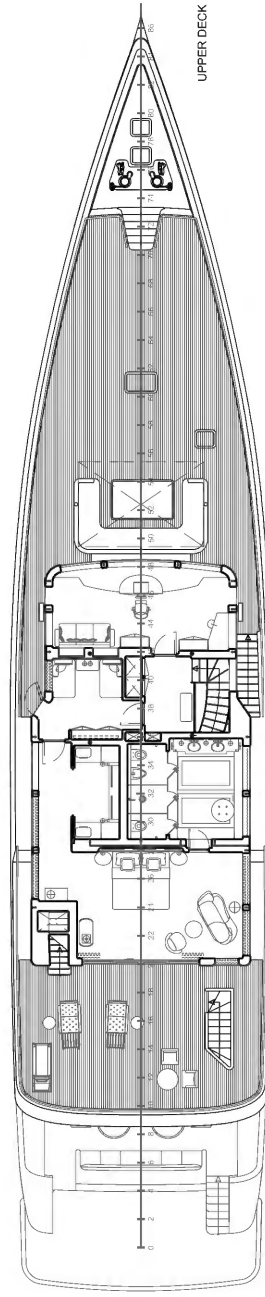
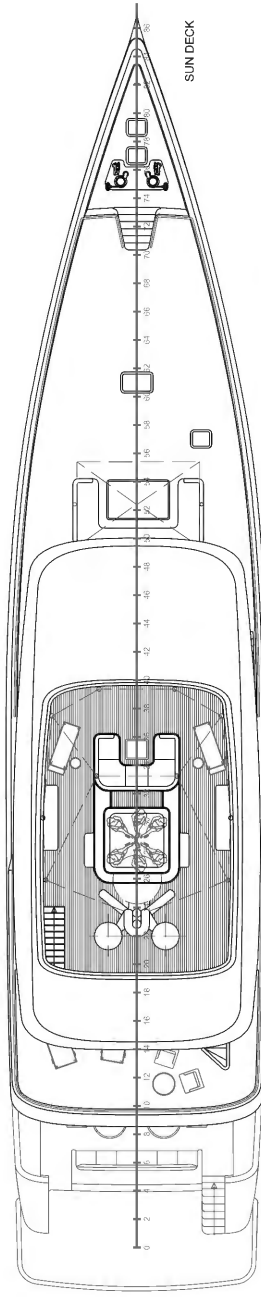
**OWNER**                              Full-beam owner's cabin with king-size bed and owner's study on the upper deck

**GUESTS**                            1 x VIP guest cabin on the main deck  
  
2 x guest double guest cabins (1x with pullman) on the lower deck  
  
1 x twin guest cabin with pullman on the lower deck

**CREW**                                4 x crew cabins on the lower deck 8 to 11 crew

---

*These particulars have been prepared from information provided by the sellers and are intended as a general guide to the vessel. We cannot, however, be liable for any inaccuracy. It is up to the purchaser to confirm details of concern to him by survey, inspection and/or enquiry of the seller and to ensure that the purchase contract properly reflects his concern and specific details upon which he may rely. We always advise an independent survey.*





**BLACKORANGE**  
S U P E R Y A C H T   E X P E R T S

**Grégory GHERAIA**  
**Director of BLACKORANGE Superyacht Experts**

**+33699939099 | +971505796099**  
[greg@blackorange-yachts.com](mailto:greg@blackorange-yachts.com)

**CANNES- DUBAI – HONG-KONG – BARCELONA -  
GENEVE**